



**BUSINESS OF THE CITY COUNCIL  
BONDURANT, IOWA  
AGENDA STATEMENT**

Item No. 15f  
For Meeting of 04/06/2020

**ITEM TITLE:** Discussion item to consider a community garden.

**CONTACT PERSON:** Nicole Van Houten, Communications and Events Specialist

**SUMMARY EXPLANATION:**

An informal Bondurant Garden Committee has formed in the light of the nation's COVID-19 pandemic. The committee is passionate about establishing a community garden within Bondurant to sustain all community members sustenance needs. Attached are maps of the potential locations, three of which are owned by the City. The committee also is seeking approval for a permanent city land location. Proposed that this will be included in the adoption of our new Parks Master Plan that is going to restructured. A plot off the Gay Lea Wilson Trail near Grant St S & south of 5<sup>th</sup> St SE near the water easement through town; the designated park lot near Cleveland Ave SE; and city owned property near the Wolf Creek neighborhood playground are all areas for consideration.

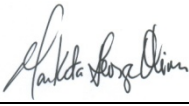
The Committee is hoping to have approval by City Council to formally start managing Bondurant Community Gardens by 2021.

Attached you will also be able to view the proposed Community Garden Rules and Regulations.

Strategic planning is in place and strategic analysis is being furnished. This will take a little more time and can be shared as it evolves. Hundreds of volunteers are coming together to help lift this off the ground.

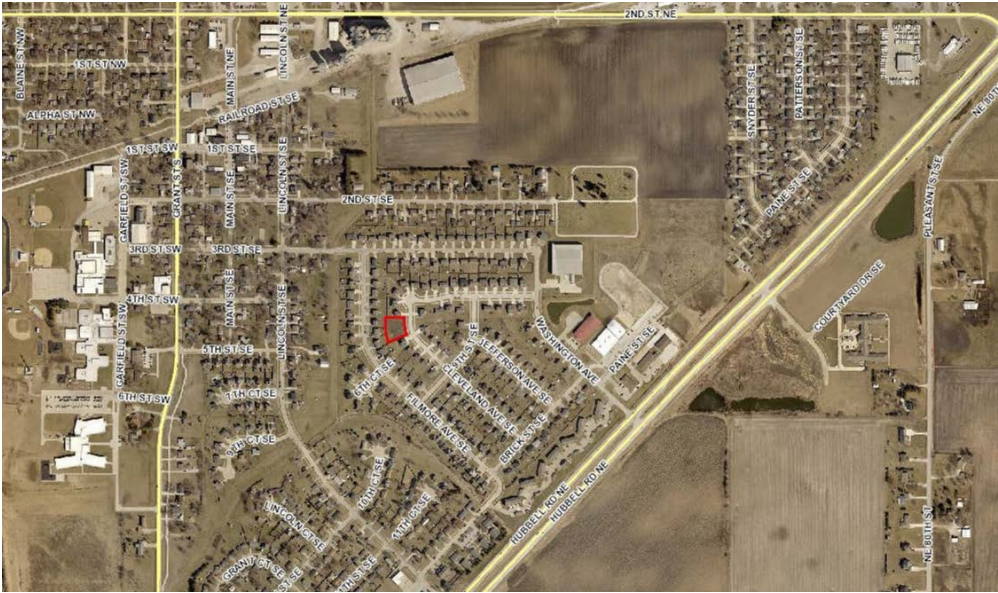
- Donation Group – solicits donations to meet our needs (plants, equipment, money, etc.)
- Community Group – connects and creates working relationships with city government, food banks, gardens, ISU, Drake, etc.
- Ground Crew – prepares soil; tilling, compost/mulch/soil truck hauls; turns soil, etc.
- Planting Group – soil testing, garden design, collects plants, gets plants in the ground, drip hose layout, weed barrier/mulch, etc.

- Volunteer Group – willing to weed, shovel, rake, hoe, water, weed or any general duty that arises in which you could potentially get dirty. Coordinator will manage volunteers, get phone numbers and the track hours.
- Home Garden Group – communicates, coordinates, and tracks home gardeners who plant extra at their home site. Also coordinates home garden drop offs to distribute to sites.
- Harvest Group – tracks crop volume & maturity, figures out weekly rations
- Consumer Group – facilitates food distributions, tracks who gets disbursed (weekly), handles any consumer issues, etc.

_____ Resolution _____ Ordinance _____ Contract _____ Other (Specify) _____ _____ Funding Source <u>N/A</u> _____ _____ APPROVED FOR SUBMITTAL _____  _____ _____ <div style="text-align: center;">City Administrator</div>
--

**RECOMMENDATION:** Give guidance on the Community Garden concept

Cleveland Park



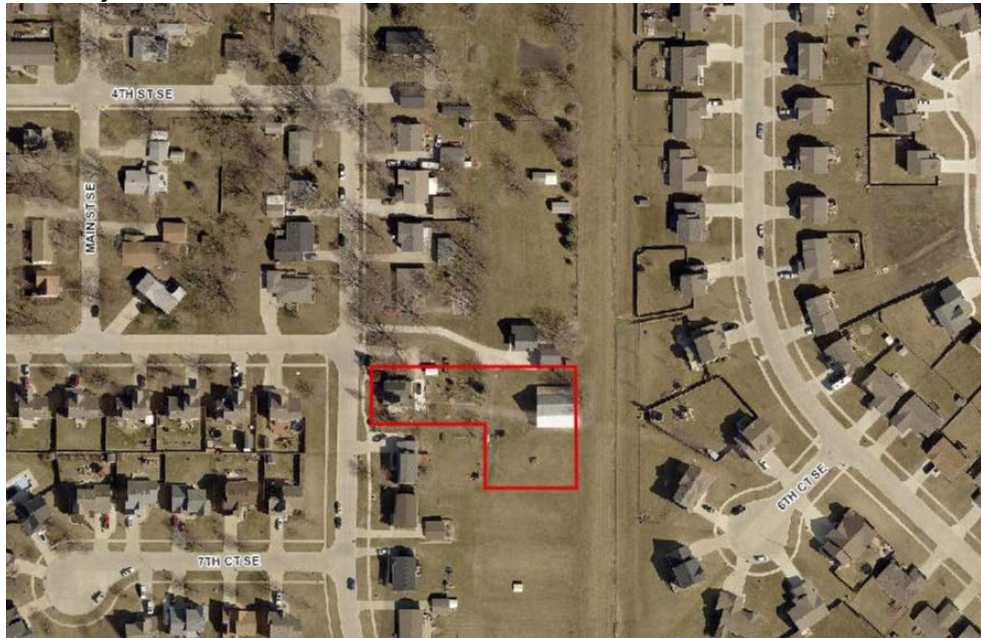
Grant Street Lot



Wolf Creek location



Privately-owned location



## Bondurant Community Garden Rules and Regulations

### Plot Size and Costs

The garden plots are approximately 10 feet by 10 feet. Each plot is marked with a plaque located on the north side of the plot (i.e. A1). Cost for the garden is \$35/season.

### Reserving

Applications to reserve a garden are located on the city website – [www.cityofbondurant.com](http://www.cityofbondurant.com). Limit of one garden plot per household.

### Garden Renewal

Returning gardeners will have until December 31 of that season to renew their plot. After December 31 plots will be available to the public. Renewal applications can be found on the city website – [www.cityofbondurant.com](http://www.cityofbondurant.com).

### Community Garden Opening Date

The garden will officially open April 1 each season; however, weather may delay opening date. If weather is not a factor opening date may be earlier than April 1. Once staff has been able to till the gardens an email will be sent out notifying gardeners that the plots are available.

### Safety and Courtesy

Children must be supervised at all times by adults in the community garden.

Seasonal and temporary gardening structures such as trellises are allowed if they do not encroach upon paths, community spaces, or neighboring plots. Be considerate of your neighbors and orient your structures and plantings to avoid casting shade on other plots. All structures should be removed when a plot is vacated.

All walking paths should remain open at all times.

Please close the community garden gates upon leaving.

Pets are not allowed in the community garden.

Crops are for home use, not commercial purposes, and must be legal.

Do not plant trees, invasive or fast spreading plants such as mint, bronze fennel, comfrey, lemon balm, horseradish, ivy, holly, lesser celandine, marsh marigold, etc. Staff will remove these items immediately without notification.

### Garbage and Composting

There is no garbage pickup at the garden site. Each gardener is responsible for dealing with the garden material generated from their plot. Do not dump or pile garden materials anywhere at the community garden.

Please do not use local business' dumpsters.

At the end of the season the city will provide a trailer for gardeners to place their organic plant material in. If using the trailer please do not place plant material in compost bags. The trailer will be available for up to two weeks at the end of October. Non-organic material **MUST** be removed and disposed of by the gardener.

#### Garden Plot Fertilizing and Mulching

Gardeners may apply organic (such as composted plants and manure) or chemical fertilizer. Follow application rates for commercial products carefully, as excess chemical fertilizers can burn plants and/or reduce seed germination.

Bringing food scraps from home to compost in your plot, including cooked foods, meats, dairy, eggs, or bones is strictly prohibited.

#### Garden Neglect and Weed Control

Gardens and pathways must be kept free of weeds. Gardeners are responsible for weeding their gardens and the borders of the area. The garden is in public display and a neat garden appearance is important. Weeds spread seeds to adjacent garden plots and cause problems for other gardeners. Hoeing and hand weeding to control weeds, as well as mulching, are very important.

Gardeners need to maintain a clean looking plot. Those who have neglected garden plots will be notified to remove weeds. If a gardener does not comply, the gardener will lose their community gardening plot. Gardeners that lose their plot will not be given a refund.

#### Authorized People

Only garden participants, co-gardeners, people the gardeners invite, or other authorized personnel with business at the site are permitted in the garden site.

#### Water at Garden Site

Water is available at the community garden. Please make sure you turn off the water when done. Please call 515-967-2418 immediately if there is an issue with the water. Water will be turned on once freezing is not a factor and will be turned off in October.

#### Soil Preparation

All garden plots will be tilled once just prior to the opening of the garden. Additional tillage is the responsibility of the gardeners. Gardeners will be notified once tilling has been completed by staff.

### Pesticide Use

The use of pesticides is prohibited.

### Garden Cancellation

If you choose not to use your garden plot, please contact City Hall at 515-967-2418 by March 1, so the plots can be reassigned. There will be no refund after March 1. Garden plots are assigned by staff and may not be given to someone else.

### Donation of Excess Production

Gardeners are encouraged to donate excess production to local food pantries.

### Garden Closing Date

The Community Garden will close on October 31. Gardeners are required to clean plots and remove all vegetation and temporary garden structures.

### General Information

For further information on the Community Garden Rules and Regulations please call City Hall at 515-967-2418 or email Nicole at [nvanhouten@cityofbondurant.com](mailto:nvanhouten@cityofbondurant.com)